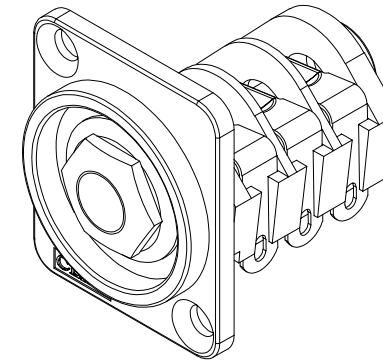
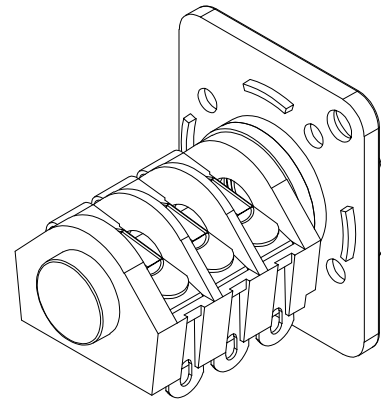
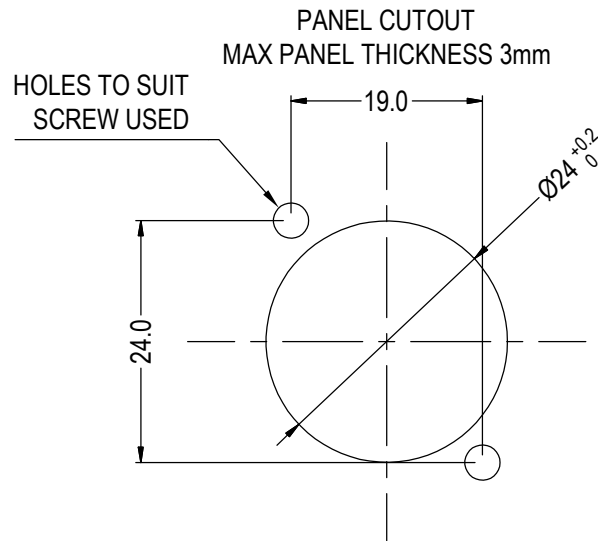
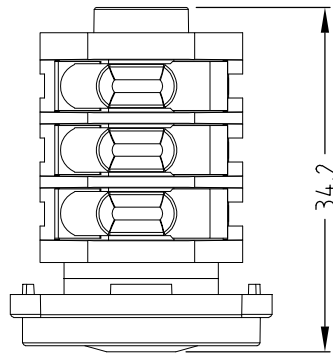
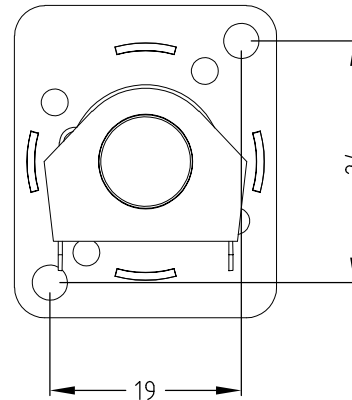
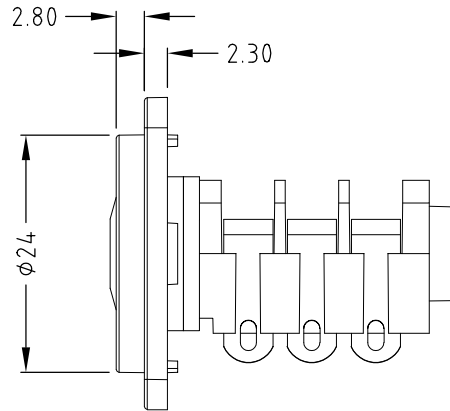
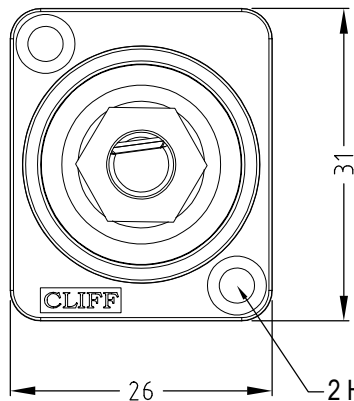


ISS.	AMEND	DATE
1	ISSUED	11/04/201



ITEM	DESCRIPTION	MATERIAL	FINISH
1	FRAME	POLYAMIDE UL94 V2	BLACK
2	JACK BODY	POLYAMIDE UL94 V2	BLACK
3	NUT	BRASS	CHROME
4	BEZEL	POM	BLACK
5	WASHERS	FIBRE	BLACK
6	CONTACTS	NICKEL SILVER	-

CP303080 - CSK HOLES

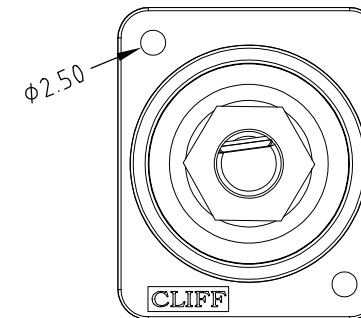


2 HOLES: Ø3.50 CSK 82° x Ø5.85
'X' VERSION HAS Ø2.50 HOLES.

NOTE:-
FOR FRONT MOUNT USE SCREWS 7mm MAXIMUM LENGTH.
FOR BACK MOUNT USE SCREWS 7mm + PANEL THICKNESS MAXIMUM LENGTH.

VARIANTS	
PART NO.	HOLE DETAILS
CP303080	HOLE Ø3.50xCSK 82°x Ø5.85
CP303080X	PLAIN HOLE Ø2.50

CP303080X - Ø2.50 PLAIN HOLES



RoHS
COMPLIANT

TOLERANCE
NO DEC. PLACE ±
1 DEC. PLACE ±
2 DEC. PLACE ±
HOLE Ø ±
ANGLES ±
UNLESS
OTHERWISE STATED

Cliff Electronic Components Ltd.
76 Holmethorpe Avenue, Holmethorpe Industrial Estate,
Redhill, Surrey, RH1 2PF, England, UK
Tel: 01737-771375 Fax: 01737-766012 Website: www.cliffuk.co.uk

DIMENSIONS IN MILLIMETERS UNLESS OTHERWISE STATED. WORK TO DIMENSIONS. REMOVE ALL BURRS. IF IN DOUBT ASK.

3rd ANGLE PROJECTION:

DO NOT SCALE

MATERIAL: SEE TABLE

TITLE: XRP3 S4/BBB/ST

FINISH: SEE TABLE

THE CONTENTS OF THIS DOCUMENT MUST NOT BE COPIED OR DISCLOSED TO A 3rd PARTY WITHOUT WRITTEN PERMISSION OF CLIFF UK. © 2018

DRAWN: NJB

APPROVED: DPJ

DRWG. No. **CP303080**

FORM: A4DRWGf